

CANADIAN

OCTOBER 2019

# HOUSE & HOME

BRIAN GLUCKSTEIN'S  
LATEST SHOWHOME

MJÖLK FOUNDERS'  
STONE FARMHOUSE

NEW DIRECTIONS  
IN KITCHENS

## BEST FALL DECORATING

80+

ROOMS  
THAT  
MASTER  
THE MIX

MODERNIST  
REVIVAL IN  
PALM BEACH  
*Page 108*

In the Kitchen  
with *Queer Eye's*  
**ANTONI  
POROWSKI**

Display until October 6 \$6.50



www.houseandhome.com

# WINNING WAYS

Designer Brian Gluckstein outdoes himself with a must-see showhome that holds the promise of life well lived.

Architecture by **RICHARD WENGLE ARCHITECT** | Design by **BRIAN GLUCKSTEIN**  
Text by **GRACE TOBY** | Photography by **ANGUS FERGUSON**

Low-set wainscoting and full-length drapery emphasize the great room's lofty ceiling. "I like high ceilings and love to incorporate at least one in every design," says Brian. High-contrast trim on the off-white coffee tables and armchairs evokes the signature piping of a timeless Chanel jacket. **Sofa**, GlucksteinHome; **armchairs, cube tables, throw pillows, art** (right), Gluckstein Design Planning; **drapery fabric**, Threadcount Textile & Design; **rug**, Elte; **photographic art** (left) by Tony Koukos; **wall and trim colour**, Distant Gray (OC-68), **ceiling colour** (throughout), Decorator's White (CC-20), Benjamin Moore.



**L**ike the glamorous lead in a classic Hollywood film, this year's Princess Margaret Cancer Centre Home Lottery Showhome makes an alluring first impression: it greets you in a dramatic fashion

and dazzles you with gorgeous looks, but is careful not to give away too much, too fast. From the extra-tall foyer just inside the front door, a tiger-print rug worthy of Lana Turner can be glimpsed in the home office across the hallway. "It's similar to a carpet I had in my New York City apartment years ago," says designer Brian Gluckstein. The scene beckons visitors forward until the 6,700-square-foot home's elegant main floor is revealed through a procession of grey-trimmed archways. "The house is quite open, but I didn't want you to see everything as soon as you walk in," says Brian. In design, as in the movies, a little mystery goes a long way.

Set on a corner lot in a leafy neighbourhood of south Oakville, Ont., the five-bedroom, two-storey house is loosely inspired by French Normandy style. In less than eight months, Brian expertly tempered the interior's open layout by creating defined living spaces with purpose. He pulled in some walls (to create a centre courtyard) and pushed out others (the great room is generously sized and self-contained), varied ceiling heights and balanced bright, lofty spaces with cosy, moodier rooms. Nearly every surface received its own treatment, from washable murals in the kitchen to a grey wall covering on the dining room ceiling to graphic floor tiles in the foyer. Grey-washed white oak floors with a scraped finish quietly tie together the showstopping elements.

**TOP RIGHT:** For the home's French Normandy-inspired exterior, architect Richard Wengle chose an aged brick that looks like lime has seeped through over time. **Construction**, PCM Project and Construction Management; **landscape architecture**, Strybos Barron King Landscape Architecture.

## SHOWHOME



### EVERYONE WILL BE TALKING ABOUT

#### The tiger-print rug

"It adds whimsy and drama, and brings in the black that's the accent colour in the space. I wanted that wow factor," says Brian.

**ABOVE:** A square table replaces the usual desk, making this home office a multipurpose space that works for the entire family. "The kids can do homework at the table while parents sit and work on the daybed with a laptop," says Brian. **Wall covering,** Crown Surface Solutions; **pendant,** Universal Lighting; **drapery fabric,** JF Fabrics; **rug,** Elte; **table,** Cocoon Furnishings; **vase,** Hopson Grace; custom **chaise, art,** Gluckstein Design Planning; **trim colour,** Silver Satin (OC-26), Benjamin Moore. **TOP LEFT:** Toronto designer Brian Gluckstein stands in the great room of the seventh Grand Prize Showhome he's designed for the Princess Margaret Cancer Centre Home Lottery. **Console,** Sunpan.

**BOTTOM LEFT:** "The two-storey foyer gives the entrance a sense of drama," says Brian. "The real showstopper is the patterned floor, which we created to achieve a strong, graphic look." **Floor tile,** Cosentino; **bench,** GlucksteinHome; **photographic art,** Pl Fine Art; **ceiling fixture,** Universal Lighting; **wall and trim colour,** Silver Satin (OC-26), Benjamin Moore.



## EVERYONE WILL BE TALKING ABOUT

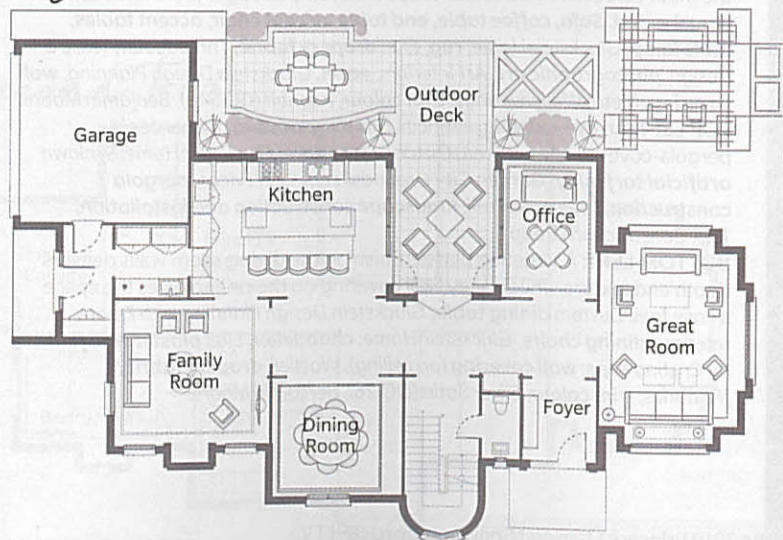
### The bookcase murals

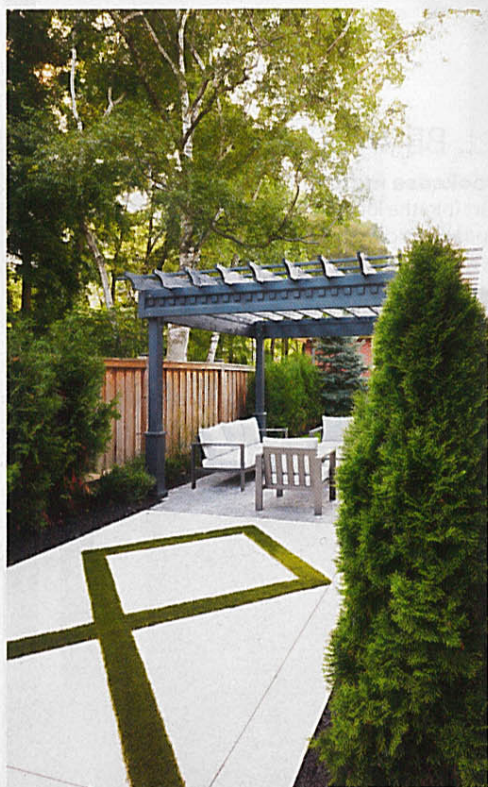
"I wanted to bring art into the kitchen," says Brian. "Instead of using plain panels to cover the refrigerator and freezer columns, we worked with Tony Koukos on a pair of murals and had them applied to the façades."

**ABOVE AND RIGHT:** "The showhome has the most storage we've done in a kitchen, but it's discreet," says Brian. Some of the appliances, including the Jenn-Air wall oven and microwave oven drawer, are even incorporated into the island. The kitchen's bookshelf murals add an unexpected element in the sleek space. *Custom cabinets, dining table, PM Fine Cabinetry; countertops, backsplash, Cosentino; hardwood flooring (throughout), Vintage Hardwood Flooring; faucet, Grohe; pendants, sconces, Universal Lighting; chairs, Elte Mkt; wall murals by Tony Koukos; white bowl, tea towel, wooden bowl, cutting board (all on island), white pitcher (on back countertop), Hopson Grace; wall covering, Primavera.*



## Main Floor





## EVERYONE WILL BE TALKING ABOUT

### The arched windows

"They add a classical element to the interiors that's in keeping with the French Normandy style of the architecture," says Brian.



**ABOVE:** Extending the family room's corner windows to the floor and topping them with elegant arched transoms has a custom look and connects the mint-coloured room to the outdoors. A striped rug underscores the casual mood. **Sofa, coffee table, end table, accent chair, accent tables, table lamp,** GlucksteinHome; **rug,** Elte; **drapery fabric,** Threadcount Textile & Design; **photographic art,** Art Interiors; **easel,** Gluckstein Design Planning with Estate Interiors; **wall covering,** Metro Wallcoverings; **trim colour,** Asphalt (CC-548), Benjamin Moore. **TOP LEFT:** An eye-catching artificial turf inlay leads to the garden's pergola-covered lounge area. **Outdoor furniture,** GlucksteinHome; **Synlawn artificial turf inlay,** Garden City Groundskeeping Services; **pergola construction,** Limestone Trail; **landscape construction and installation,** Tekk Construction Group.

**BOTTOM LEFT:** A Venetian plaster finish on the dining room walls delivers depth and texture while a grey wall covering on the ceiling gives the space a cosy feel. Custom **dining table,** Gluckstein Design Planning with Estate Interiors; **dining chairs,** GlucksteinHome; **chandelier,** Elte; **plaster wall finish** by Cristina Pepe; **wall covering** (on ceiling), Woeller; **drapery fabric,** JF Fabrics; **trim colour,** Silver Satin (OC-26), Benjamin Moore.



**ABOVE:** In the principal bedroom, a shallow alcove behind the bed and the vaulted ceiling create an environment that's both grand and intimate. **Bed, bed linens, nightstands,** GlucksteinHome; **ceiling fixture,** Universal Lighting; **rug,** Elte; **art (left),** Art Interiors; **wall and trim colour,** Silver Lining (2119-60), Benjamin Moore.

**RIGHT:** Subtle texture and strategic doses of shine in the principal ensuite keep the look simple yet sophisticated. **Custom cabinets,** PM Fine Cabinetry; **hardware,** Richelieu; **sinks, faucets,** DXV; **countertop, floor tile,** Cosentino; **sconces,** Universal Lighting; **accessories,** GlucksteinHome.

The cumulative effect of these many thoughtful moments is at once modern and traditional, open and inviting. The home's easy flow, plush conversation zones and dream kitchen make it ideal for gatherings and entertaining — a good thing, since the house will soon welcome more than 70,000 visitors. This is Brian's seventh showhome, and he remains committed to providing the imminent crowd and, ultimately, the lucky winner, with lots of fresh inspiration. "I want people to leave with ideas they can replicate at home," he says.

There's also plenty to simply fantasize about. One of this year's drool-worthy spaces is found on the lower level: the wellness spa is kitted out with a side-by-side dry sauna and wet steam room, a DXV tub with a waterfall feature, a massage room and a spinning studio, all enclosed by terry cloth drapery and glass doors. Taking a seat in the steam room looking out at the spa, Brian says, "This is my favourite space. It's what I want in my basement — and everyone who comes down here says they want one, too." Already planning next year's showhome, Brian wonders aloud how he'll top this.

## EVERYONE WILL BE TALKING ABOUT

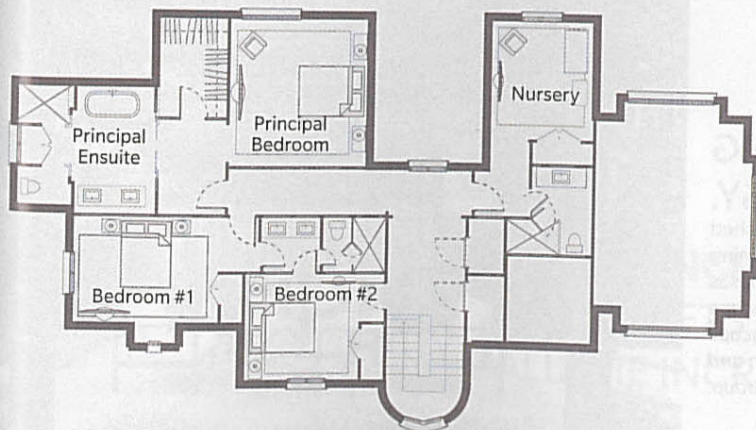
### The bathroom floor tile

"It's a graphic focal point," says Brian.

"To create the look, large-scale slabs were cut and arranged in this pattern, but the technique can be replicated by cutting down less expensive 12- by 12-inch tiles in different colours."



## Second Floor



HOUSE & HOME + PRINCESS MARGARET HOME LOTTERY

# BEST OF THE BEST

DISCOVER **6 WAYS** YOUR LIFE WILL CHANGE AFTER WINNING PRINCESS MARGARET HOME LOTTERY'S \$6 MILLION GRAND PRIZE, INCLUDING THE OAKVILLE SHOWHOME!

*"The showhome sight lines are stunning and there is so much natural light"*

— BRIAN GLUCKSTEIN



## 1 YOU'LL GO TO THE SPA EVERYDAY — AT HOME!

"We decided to create a retreat within the house," says Brian. "Whether you want a steam, sauna, massage or spin class, it's all on the lower level." **Design,** Brian Gluckstein, Gluckstein Design Planning; **Dekton Opera flooring, countertop, shower walls,** Cosentino; **Keshi wall covering,** Designtex; **drapery,** Threadcount Textile & Design; **cabinets,** PM Fine Cabinetry; **pendant,** Universal Lighting; **sink, faucet, tub, tub filler,** DXV.

TOUR THE  
SHOWHOME  
WITH BRIAN  
ON H&H TV

Watch videos at  
[houseandhome.com/pmhl](http://houseandhome.com/pmhl)

## 2 SUMMERTIME LIVING WILL BE EASY.

Lush landscaping and fully furnished backyard "rooms" make entertaining a breeze, whether it's brunch and mimosas or evening cocktails with friends. **Landscape architecture,** Strybos Barron King Landscape Architecture; **landscape construction and installation,** Tekk Construction Group.





# 3

## YOU'LL BE SITTING PRETTY.

All of the gorgeous furniture, accessories, wallpaper and paint in the 6,700-square-foot showhome have been handpicked by Brian Gluckstein and are yours to keep! **Hardwood flooring**, Vintage Hardwood Flooring; **drapery**, Threadcount Textile & Design; **rug**, Elte; **sofa, chair, coffee table, side table**, GlucksteinHome; custom **throw pillows and art**, Gluckstein Design Planning; **wall and trim colour**, Distant Gray (OC-68), Benjamin Moore.



# 4

## GOURMET MEALS WILL BE THE NORM.

Indulge your inner chef with the kitchen's Jenn-Air 36-inch induction downdraft cooktop, which offers the cooking power of gas without the need for overhead ventilation. "I love the sleek and striking design of the showhome appliances!" says Brian.

# 6

## YOU'LL FEEL GREAT ABOUT SUPPORTING PRINCESS MARGARET CANCER CENTRE.

With nearly one in two Canadians expected to be diagnosed with cancer, funds raised from the lottery support The Princess Margaret and its team of world-leading researchers and clinicians who are making the impossible possible. "We love using design to raise funds for such an important institution," says Brian.

# 5

## YOU'LL TAKE A LUXURIOUS, EXTENDED ROAD TRIP.

After all, the grand prize includes \$1 Million Cash and a 2020 Range Rover, so cost is no object!



PRINCESS MARGARET  
**HOME  
LOTTERY**  
TO CONQUER CANCER

Lot. Lic. #10873

VISIT **PRINCESSMARGARETLOTTO.COM**  
FOR TICKETS AND A FULL LIST OF  
ALL THE INCREDIBLE PRIZES!

# Source Guide

(905) 616-0883 or kattlus.ca; blind fabric, Kravet Canada (to the trade), 1-800-535-3258 or kravetcanada.com. **Bookcase:** Armchair, Shelter Furniture, (416) 783-3333 or shelterfurniture.ca; armchair upholstery fabric, Tonic Living, (416) 699-9879 or tonicliving.com; built-ins design, Jackie Di Cara Design, (416) 400-9490 or jackiedicaradesign.com; built-ins fabrication, Fireplace Concepts, fireplaceconcepts.com; black bench, Kroft, kroft.co; art (above bench), Minted, minted.com; fireplace insert, Element4, element4.nl; sconce, Cedar & Moss, cedarandmoss.com. **Page 90:**

**Kitchen:** Cabinetmaker, Kattlus Cabinetry & Millwork, (905) 616-0883 or kattlus.ca; pendants by Pablo Bola, GR Shop by Gabriel Ross, (250) 384-2554 or grshop.com; faucet by Waterstone, Roman Bath Centre, (416) 787-1219 or romanbathcentre.com; black bowl, Elte, (416) 785-7885 or elte.com; lamp (on countertop), Kelly Wearstler, kellywearstler.com. **Page 91: Entry:** Mirror, Elte, (416) 785-7885 or elte.com; bench, Katy Skelton, (912) 306-0003 or katyskelton.com; ottoman (in entry), Vitra, vitra.com; floor tile (in entry), Mettro Source, (416) 913-1722 or mettro.ca; ceiling fixture, Ikea, 1-866-866-IKEA or ikea.ca. **Banquette:** Armchairs by Josef Hoffmann, sconce by Flos, Design Within Reach, dwr.com. **Staircase:** Wallpaper, Juju Wallpapers, (503) 764-7610 jupapers.com; art (behind Dane), Block Shop Textiles, blockshoptextiles.com.

**Page 92: Home office:** Desk by Normann Copenhagen, The Modern Shop, 1-877-748-0387 or themodernshop.ca; chair, Ikea, 1-866-866-IKEA or ikea.ca; coffee table by Blu Dot, Urban Mode, (416) 591-8834 or urbanmode.com; sofa, Crate & Barrel, 1-888-657-4108 or crateandbarrel.ca; blind fabric, Y&Co., (416) 968-7700, (514) 287-8998 or ycocarpet.com; wooden bowl, Tonic Living, (416) 699-9879 or tonicliving.com. **Dane's bedroom:** Bed by Blu Dot, shelves by Muuto, Urban Mode, (416) 591-8834 or urbanmode.com; wallpaper, Onself, onself.com; ceiling fixture by Normann Copenhagen, The Modern Shop, 1-877-748-0387 or themodernshop.ca; duvet cover, Schoolhouse Electric & Supply Co., 1-800-630-7113 or schoolhouseelectric.com; blanket (at foot of bed), Elte, (416) 785-7885 or elte.com; blind fabric by Caroline Z Hurley, Y&Co., (416) 968-7700, (514) 287-8998 or ycocarpet.com; rug, RH, 1-800-910-9836 or rh.com. **Page 94: Bathroom:** Vanity design, Jackie Di Cara Design, (416) 400-9490 or jackiedicaradesign.com; millwork, Kattlus Cabinetry & Millwork, (905) 616-0883 or kattlus.ca; floor tile, Mettro Source, (416) 913-1722 or mettro.ca; sinks, tub, Roman Bath Centre, (416) 787-1219 or romanbathcentre.com; faucet, Ginger's,

1-888-444-3292 or gingersbath.com; shower stool, Coolican & Company, (416) 320-2391 or coolicanandcompany.com; wall tile, Saltillo Imports, (416) 441-2224 or saltillo-imports.com; countertop, Caesarstone, caesarstone.ca. **Porthole window:** Window design, Jackie Di Cara Design, (416) 400-9490 or jackiedicaradesign.com; millwork, window construction, Kattlus Cabinetry & Millwork, (905) 616-0883 or kattlus.ca. **Principal bedroom:** Brass sculpture by Martha Sturdy, Hollace Cluny, (416) 968-7894 or hollacecluny.ca; bedside table by Blu Dot, Urban Mode, (416) 591-8834 or urbanmode.com; ceiling fixture, Elte, (416) 785-7885 or elte.com; articulated sconce by Tom Dixon, The Modern Shop, (613) 244-4343 or themodernshop.ca; linens, West Elm, 1-855-860-1082 or westelm.com; fringed accent pillows, Serena & Lily, serenaandlily.com; door handle, Emtek, 1-800-356-2741 or emtek.com; wall colour, Railings (31), Farrow & Ball, farrow-ball.com.



## SHOWHOME

Pages 96 to 101

Design, Brian Gluckstein, Gluckstein Design Planning, (416) 928-2067 or glucksteindesign.com; construction, PCM Project and Construction Management, (416) 414-6577 or pcmnow.com; landscape architecture, Strybos Barron King Landscape Architecture, (416) 695-4949 or strybos.com; hardwood flooring, Vintage Hardwood Flooring, (416) 252-0962 or vintageflooring.com; ceiling colour, Decorator's White (CC-20), Benjamin Moore, 1-800-361-5898 or benjaminmoore.ca. **Pages 96 and 97: Great room:** Sofa, GlucksteinHome, available at Hudson's Bay, glucksteinhome.com; chairs, cube tables, throw pillows, art (right), Gluckstein Design Planning, (416) 928-2067 or glucksteindesign.com; drapery fabric, Threadcount Textile & Design, (416) 916-9012 or threadcountinc.com; rug, Elte, (416) 785-7885 or elte.com; photographic art (left) by Tony Koukos, tonykoukos.com; wall and trim colour, Distant Gray (OC-68), Benjamin Moore, 1-800-361-5898 or benjaminmoore.ca. **Page 98: Portrait:** Console, Sunpan, (416) 736-0094 or sunpan.com. **Home office:** Wall covering, Crown Surface Solutions, crownsurfacesolutions.com; pendant, Universal Lighting, (416) 787-8906 or greatlighting.com; drapery fabric, JF Fabrics, jffabrics.com; rug, Elte, (416) 785-7885 or elte.com; table, Cocoon Furnishings, (905) 829-2780 or cocoonfurnishings.ca; vase, Hopson Grace, (416) 926-1120 or hopsongrace.com; art, custom chaise, Gluckstein Design Planning, (416) 928-2067 or glucksteindesign.com; trim colour, Silver Satin (OC-26), Benjamin Moore, 1-800-361-5898 or benjaminmoore.ca. **Entry:** Floor tile, Cosentino, cosentino.com; bench, GlucksteinHome, available at Hudson's Bay, glucksteinhome.com; photographic art, PI Fine Art, pifineart.com; ceiling fixture, Universal Lighting, (416) 787-8906 or greatlighting.com; wall and trim colour, Silver Satin (OC-26), Benjamin Moore, 1-800-361-5898 or benjaminmoore.ca. **Page 99: Kitchen:** Custom cabinets, dining table, PM Fine Cabinetry, (905) 670-9500 or pmfinecabinetry.ca; countertops, backsplash, Cosentino, cosentino.com; faucet, Grohe, grohe.com; pendants, sconces, Universal Lighting, (416) 787-8906 or greatlighting.com; chairs, Elte Mkt, (416) 789-0800 or eltemkt.com; wall murals by Tony Koukos, tonykoukos.com; white bowl, tea towel, wooden bowl, cutting board (all on island), white pitcher (on back countertop), Hopson Grace, (416) 926-1120 or hopsongrace.com; wall covering, Primavera Interior Furnishings (to the trade), (416) 921-3334 or primavera.ca; cooktop, refrigerator, freezer columns, Jenn-Air, jennair.ca; trim and millwork colour, Silver Satin (OC-26), Benjamin Moore, 1-800-361-5898 or benjaminmoore.ca. **Page 100: Lounge area:** Outdoor furniture, GlucksteinHome, available at Hudson's Bay, glucksteinhome.com; Synlawn artificial turf inlay, Garden City Groundskeeping Services, (905) 272-2029 or gardencitygrounds.ca; pergola construction, Limestone Trail, limestonetrail.com; landscape construction and installation, Tekk Construction Group, (905) 893-9293 or tekkgroup.ca. **Family room:** Sofa, coffee table, end table, accent chair, accent tables, table lamps, GlucksteinHome, available at Hudson's Bay, glucksteinhome.com; rug, Elte, (416) 785-7885 or elte.com; drapery fabric, Threadcount Textile & Design, threadcountinc.com; photographic art, Art Interiors, (416) 488-3157 or artinteriors.ca; easel, Gluckstein Design Planning, (416) 928-2067 or glucksteindesign.com; wall covering, Metro Wallcoverings, (905) 738-5177 or metrowallcoverings.com; trim colour, Asphalt (CC-548), Benjamin Moore, 1-800-361-5898 or benjaminmoore.ca. **Dining room:** Custom dining table, Gluckstein Design Planning with Estate Interiors, (416) 928-2067 or

com; pendant, Universal Lighting, (416) 787-8906 or greatlighting.com; drapery fabric, JF Fabrics, jffabrics.com; rug, Elte, (416) 785-7885 or elte.com; table, Cocoon Furnishings, (905) 829-2780 or cocoonfurnishings.ca; vase, Hopson Grace, (416) 926-1120 or hopsongrace.com; art, custom chaise, Gluckstein Design Planning, (416) 928-2067 or glucksteindesign.com; trim colour, Silver Satin (OC-26), Benjamin Moore, 1-800-361-5898 or benjaminmoore.ca. **Entry:** Floor tile, Cosentino, cosentino.com; bench, GlucksteinHome, available at Hudson's Bay, glucksteinhome.com; photographic art, PI Fine Art, pifineart.com; ceiling fixture, Universal Lighting, (416) 787-8906 or greatlighting.com; wall and trim colour, Silver Satin (OC-26), Benjamin Moore, 1-800-361-5898 or benjaminmoore.ca. **Page 99: Kitchen:** Custom cabinets, dining table, PM Fine Cabinetry, (905) 670-9500 or pmfinecabinetry.ca; countertops, backsplash, Cosentino, cosentino.com; faucet, Grohe, grohe.com; pendants, sconces, Universal Lighting, (416) 787-8906 or greatlighting.com; chairs, Elte Mkt, (416) 789-0800 or eltemkt.com; wall murals by Tony Koukos, tonykoukos.com; white bowl, tea towel, wooden bowl, cutting board (all on island), white pitcher (on back countertop), Hopson Grace, (416) 926-1120 or hopsongrace.com; wall covering, Primavera Interior Furnishings (to the trade), (416) 921-3334 or primavera.ca; cooktop, refrigerator, freezer columns, Jenn-Air, jennair.ca; trim and millwork colour, Silver Satin (OC-26), Benjamin Moore, 1-800-361-5898 or benjaminmoore.ca. **Page 100: Lounge area:** Outdoor furniture, GlucksteinHome, available at Hudson's Bay, glucksteinhome.com; Synlawn artificial turf inlay, Garden City Groundskeeping Services, (905) 272-2029 or gardencitygrounds.ca; pergola construction, Limestone Trail, limestonetrail.com; landscape construction and installation, Tekk Construction Group, (905) 893-9293 or tekkgroup.ca. **Family room:** Sofa, coffee table, end table, accent chair, accent tables, table lamps, GlucksteinHome, available at Hudson's Bay, glucksteinhome.com; rug, Elte, (416) 785-7885 or elte.com; drapery fabric, Threadcount Textile & Design, threadcountinc.com; photographic art, Art Interiors, (416) 488-3157 or artinteriors.ca; easel, Gluckstein Design Planning, (416) 928-2067 or glucksteindesign.com; wall covering, Metro Wallcoverings, (905) 738-5177 or metrowallcoverings.com; trim colour, Asphalt (CC-548), Benjamin Moore, 1-800-361-5898 or benjaminmoore.ca. **Dining room:** Custom dining table, Gluckstein Design Planning with Estate Interiors, (416) 928-2067 or

glucksteindesign.com and (866) 784-1877 or estateinteriors.ca; dining chairs, GlucksteinHome, available at Hudson's Bay, glucksteinhome.com; chandelier, Elte, (416) 785-7885 or elte.com; plaster wall finish by Cristina Pepe, cristinapepe@rogers.com; wall covering (on ceiling), Woeller, woeller.com; drapery fabric, JF Fabrics, jffabrics.com; trim colour, Silver Satin (OC-26), Benjamin Moore, 1-800-361-5898 or benjaminmoore.ca.

**Page 101: Principal bedroom:** Bed, linens, nightstands, GlucksteinHome, available at Hudson's Bay, glucksteinhome.com; ceiling fixture, Universal Lighting, (416) 787-8906 or greatlighting.com; rug, Elte, (416) 785-7885 or elte.com; art (left), Art Interiors, (416) 488-3157 or artinteriors.ca; wall and trim colour, Silver Lining (2119-60), Benjamin Moore, 1-800-361-5898 or benjaminmoore.ca. **Principal ensuite:** Custom cabinets, PM Fine Cabinetry, (905) 670-9500 or pmfinecabinetry.ca; hardware, Richelieu, richelieu.com; sink, faucet, DXV, 1-800-387-0369 or dxv.com; countertop, floor tile, Cosentino, cosentino.com; sconces, Universal Lighting, (416) 787-8906 or greatlighting.com; accessories, GlucksteinHome, available at Hudson's Bay, glucksteinhome.com; wall covering, Crown Surface Solutions, crownsurfacesolutions.com.



#### ALL THAT JAZZ

Pages 108 to 119

Architecture, Addison Mizner; design, Haynes-Roberts, haynesroberts.com.

**Page 108: Bar:** Vintage iron chairs by Colette Gueden, Alan Moss Gallery, N.Y., (212) 473-1310; table by Angelo Mangiarotti, chandelier by Roberto Giulio Rida, Bernd Goeckler, bgoecklerantiques.com; panelled wall colour, Balboa Mist (1549), Benjamin Moore, 1-855-361-5898 or benjaminmoore.ca. **Page 109: Living room:** Ladder chair (back left) by Romeo Rega, H.M. Luther, hmluther.com; sofa by Ward Bennett, Modern Drama, moderndrama20.com; white armchairs by Ignazio Gardella, Bernd Goeckler, bgoecklerantiques.com; Dunbar coffee table, Donzella, donzella.com; throw pillow fabric, KnollTextiles, knoll.com; Due Più chair by Nanda Vigo, Nicholas Kilner, nicholaskilner.com;

CONTINUED

H&H OCTOBER 2019 169



apt

#### CUSTOM CARPETS

Please visit our showroom where one of our professional consultants will be pleased to assist you with all of your custom rugs, stair runners & wall to wall carpeting needs

#### APT CUSTOM CARPETS

75 West Beaver Creek Rd. Unit #1

Richmond Hill, Ontario

905-764-1588

www.aptcustomcarpets.com

## HOUSE & HOME Subscription Services

#### PRIVACY POLICY

On occasion, we make our subscriber list available to carefully screened companies whose product or services we feel would be of interest to our subscribers. If you would rather not receive such offers, please state this request, along with your full name and address, and email us at [privacy@hhmedia.com](mailto:privacy@hhmedia.com).

#### SUBSCRIPTION INVOICE AND RENEWAL NOTICES

Invoices and renewals are printed 10 days before they are mailed to you, so it's possible that your subscription payment or renewal may cross in the mail with our notices. Please contact us if you are unsure of the status of your subscription.

#### SUBSCRIPTION EXPIRY

Your subscription expiry issue is printed on the top right corner of your subscription mailing label.

#### PERFUME STRIP

We occasionally mail your issue with a perfume strip in the magazine. If you wish to receive the magazine without a scent strip, please contact us.

#### CHANGE OF MAILING ADDRESS

Our magazine labels are printed several weeks before each issue is mailed. To avoid missing an issue, please contact us regarding your address change 6-8 weeks in advance.

Phone: 1-800-559-8868 Email: [subscriptions@hhmedia.com](mailto:subscriptions@hhmedia.com)

View your subscription status online: [www.houseandhome.com/service](http://www.houseandhome.com/service)